

**POLICE AND CRIME PANEL****17<sup>th</sup> March 2022****REPORT OF THE POLICE AND CRIME COMMISSIONER FOR DERBYSHIRE****ANNUAL REPORT 2020-21**

**Important notice: this report was prepared to cover the period before the May 2021 election therefore is covering the work relating to the previous Police and Crime Commissioner for the year 2020-21.**

**1. PURPOSE OF THE REPORT**

- 1.1 To present the draft Annual Report (Appendix A) for the previous Police and Crime Commissioner for Derbyshire for the period of 1<sup>st</sup> April 2020 to the 31<sup>st</sup> March 2021 in accordance with Section 12 of the Police Reform and Social Responsibility Act 2011 (PRORA).

**2. BACKGROUND**

- 2.1 Section 12 of the PRORA requires the Police and Crime Commissioner (PCC) to produce an Annual Report on:
- a) *the exercise of the body's functions in each financial year, and*
  - b) *the progress which has been made in the financial year in meeting the police and crime plan objectives in the body's police and crime plan.*
- 2.2 The PCC must present the report to the Police and Crime Panel (the Panel), at a public meeting, and answer any questions the panel may pose.
- 2.3 The PCC must also respond to any report or recommendations the Panel may make and publish said response.
- 2.4 PCCs must then publish the Annual Report, in a manner they determine.

**3. PCP RESPONSIBILITIES**

- 3.1 Section 28(4) of the PRORA outlines the Panel's responsibilities in relation to the Annual Report. It states that:

(4) *A police and crime panel must -*

- (a) *arrange for a public meeting of the panel to be held as soon as practicable after the panel is sent an annual report under section 12,*
- (b) *ask the police and crime commissioner, at the meeting, such questions about the annual report as the members of the panel think appropriate,*

- (c) *review the annual report, and*
- (d) *make a report or recommendations on the annual report to the commissioner*

## **PUBLICATION**

- 4.0 Subject to the report or recommendations made by the Panel, the PCC intends to publish the Annual Report as a document on the PCC Website.
- 4.1 The PCC does not intend to produce large numbers of physical copies of the report.
- 4.2 Should a member of the public wish to receive a hard copy of the Annual Report the office will ensure that they are sent one.
- 4.3 The version at Appendix A does not include a message from the Chair of the Police and Crime Panel as one has yet to be provided, though this can be included if required.

## **5.0 RECOMMENDATIONS**

- i That the panel receives the Annual Report 2020-2021.
- ii That Panel Members ask such questions, and make any recommendations, on the Annual Report 2020-21 as they think appropriate.
- iii That, subject to any report or recommendations by the Panel, the Annual Report is published via the PCC's website – [www.derbyshire-pcc.gov.uk](http://www.derbyshire-pcc.gov.uk).

<b>Contact details in the event of enquiries</b>	<b>Name: Andrew Dale</b> <b>External telephone number: 0300 122 6000</b> <b>Email address: <a href="mailto:pccoffice@derbyshire.pnn.police.uk">pccoffice@derbyshire.pnn.police.uk</a></b>
--	---

**DRAFT**

**Police & Crime Commissioner for Derbyshire**

**Annual Report  
April 2020- March 2021**

## INTRODUCTION

Due to the unprecedented impact of Covid-19 on the world, the Police and Crime Commissioner (PCC) elections were postponed this year meaning the term has been extended by 12 months. It is anticipated that the elections will take place in May 2021.

It is difficult to look back on this year and not focus on the world-changing impact of Covid-19. The global pandemic has had a direct impact on everybody. We have seen periods of lockdown, many of us have needed to adapt to a world of online meetings and working from home. We have seen a real growth in local communities and their support for one another.

# THE HELLOS AND GOODBYES

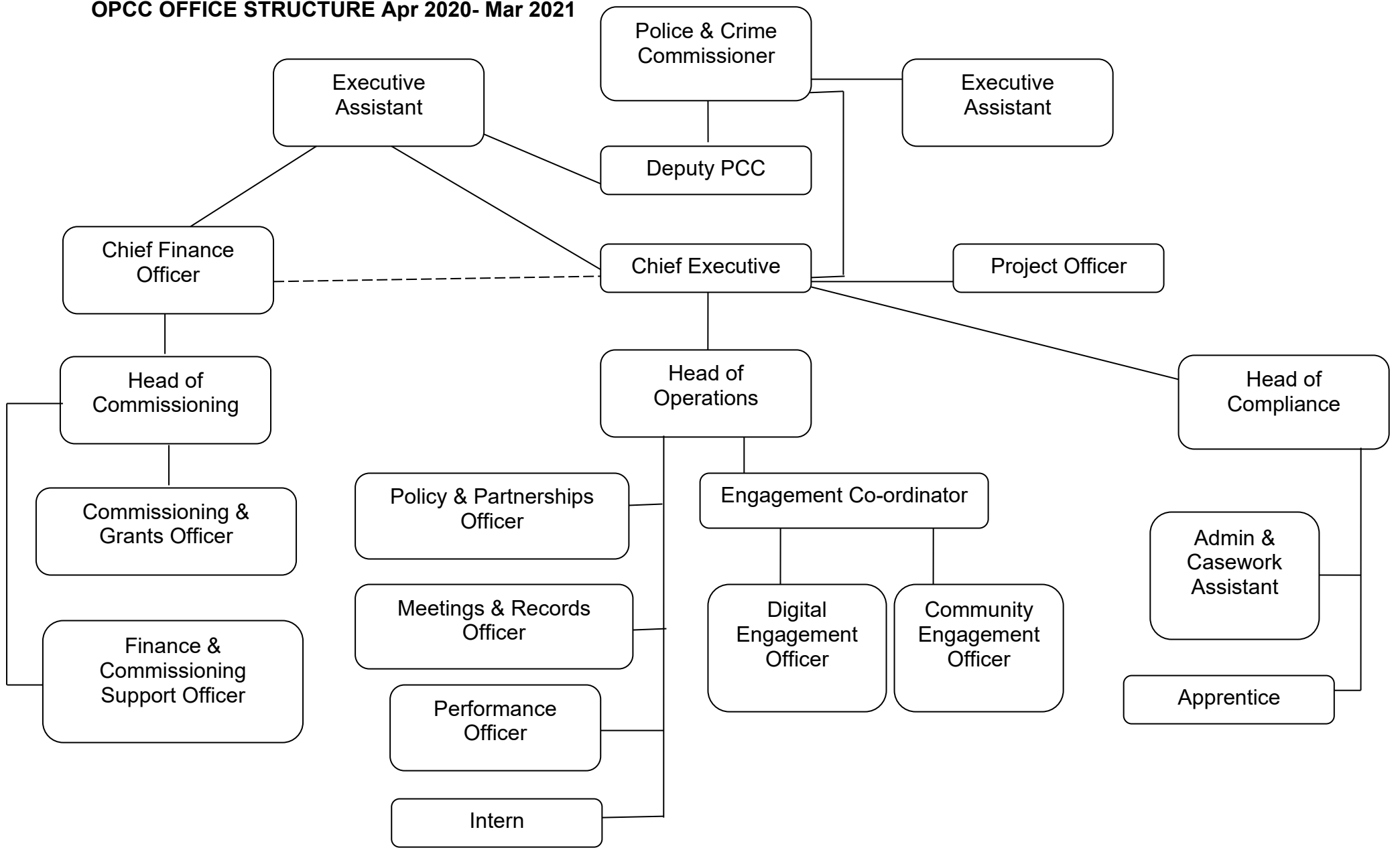
## **The OPCC**

Emily Wakeland left her role as Intern and we welcomed Katie Stevens as the new Administration and Casework Assistant.

## **Derbyshire Constabulary**

There has been some change in the top corridor within the Force. Peter Goodman retired this year as Chief Constable and Rachel Swann has taken over the top job. We have also welcomed Kate Meynell as our new Deputy Chief Constable. We have seen Paul Gibson leave the Force and take up a new role heading up collaboration in the Region. We have also welcome T/ACC Michelle Shooter and T/ACC David Kirby into the senior leadership team.

**OPCC OFFICE STRUCTURE Apr 2020- Mar 2021**



# THE POLICE & CRIME PLAN 2016-21

One of the statutory responsibilities of a new Police and Crime Commissioner is to produce a Police and Crime Plan, which is kept under review. Part of this review process is engagement with the public to understand what is important to them as well as consideration of the main threats and risks identified by the police and wider partners.

The 2016-21 Plan contains seven strategic priorities:

1. Working to keep the most vulnerable in our communities safe from crime and harm and supporting those who unfortunately find themselves a victim of crime
2. Working to tackle the emerging threats of cyber and cyber-related crime on individuals, businesses and communities
3. Working to tackle the impact of drugs and alcohol on communities
4. Supporting those with mental health issues, including those with learning difficulties, who come into contact with the Criminal Justice System, as victim or offender, to get the right support, from the right agencies at the right time
5. Working with young people, including those who have been either victims of crime or offenders, to understand their needs and prevent them becoming involved in criminal activities
6. Working with the Constabulary to develop the policing family to be more representative of the diverse communities it serves
7. Working with the Constabulary and partners to maximise the opportunities from developments in technology

Having reviewed the results of engagement activity with members of the public, as well as understanding the current threats and risks identified by the Force and partners, the decision has been taken to retain the current seven priorities as they are.

## SIGNIFICANT ACHIEVEMENTS

As this will be the last annual report for the Police and Crime Plan as it stands, a summary of overall delivery against the plan and key achievements has been provided.

**Priority 1: *Working to keep the most vulnerable in our communities safe from crime and harm and supporting those who unfortunately find themselves a victim of crime***

- Victim Support Services – We have continued to lead on the commissioning of both generic and specialist support services for victims of crime. Some of this commissioning has been PCC only and some co-commissioned work has been undertaken with partners.
- Core Website – We have continued to develop the CORE victims' website providing a wealth of information to Derbyshire residents on different crime types including details of support services which are available to access both locally and nationally.
- UN Global Compact - Following the signing of the letter of commitment in June 2017, the City of Derby formed a Strategic Leadership Group of representative parties to determine and steer the City's approach to its commitment to the UN Global Compact.
- Hate Crime work- We have developed a model and approach based on research undertaken by Leicester University. The aim of the model was to establish an integrated service to support hate crime victims, including those who identify with protected characteristics, LGBT+, Disability and Race and Religion communities. To build relationships with local partners who are either working with the target audience or who have a good understanding of local issues enabling more effective engagement with communities particularly those who may have additional vulnerabilities.
- DRIVE programme - DRIVE is a nationally recognised programme responding to High Harm Perpetrators of Domestic Abuse and works to increase the safety for victims and their children. It is supported by the Home office and the approach has been evaluated by the University of Bristol. The DRIVE partnership comprises of three organisations with strong reputations in the field of Domestic abuse - Respect, Safelives and Social Finance who work collaboratively with local partner organisations to implement the model around the UK. The PCC and Derbyshire Police, with partner support, have collaborated with the national DRIVE team to become a pilot site to develop a local programme for perpetrators and victims. There are a number of other areas with pilot sites from which we can learn.
- Willow Project – We have worked with Rural Action Derbyshire to build on existing links and relationships to develop a network of supportive, knowledgeable people who understand the issues around domestic abuse and can help to identify, support and signpost individuals at risk to services and help. This innovative approach to supporting victims of domestic abuse recognises the additional challenges living within a rural setting can pose.
- Victim Engagement – As part of our statutory duty we have continued to engage with victims of crime to understand their concerns and priorities and have used this to inform commissioning and grant making as well as developments within the Police and Crime Plan.



**Priority 2: Working to tackle the emerging threats of cyber and cyber-enabled crime on individuals, business and communities.**

- We have grant funded a number of initiatives working within communities to support individuals in keeping themselves safe from online harm. These have included a 'Fixers' programme supporting three youth social action projects addressing cyber-crime and a Community Digital Champions project run through Rural Action Derbyshire.
- I-Vengers programme - The i-vengers programme is a peer led digital leaders programme which focuses on the positive aspects of being online and aims to raise awareness of, and resilience around the risks that children and young people may face online. We do this by setting 2 tasks per term that schools have to complete and each term at least one of the tasks incorporates parental engagement. All of our i-venger schools have access to a secure online portal where the resources to complete the tasks are stored.

**Priority 3: Working to tackle the impact of drugs and alcohol on communities**

- Intoxicated - The 'Intoxicated' campaign was initially launched within Derbyshire Constabulary back in 2013. The campaign is aimed at helping alcohol licence holders and their staff to better understand the legislation around preventing the irresponsible sale of alcohol and to increase their skills on how to refuse the sale to somebody who is already intoxicated.
- Safe Night Out - The Safe Night Out strategy is our umbrella brand which includes a number of key work streams (detailed below). Each year, a dedicated Safe Night Out event occurs at Derby Students' Union to coincide with the new cohort of students beginning university during fresher's week. This awareness raising event is aimed at providing students with the information they need to stay safe on a night out whilst encouraging people to drink responsibly.
- PEEP (Proactive Engagement & Enforcement Programme) - The core priority of the PEEP is to stop the revolving door of crime. The majority of those listed on the PEEP programme are averse to the traditional style of intervention for fear it will restrict or control their activities and behaviours.
- Safe Space- Safe Space has been setup to help vulnerable people, many of whom have had an adverse childhood or adulthood and increase their opportunities for recovery. Safe Space achieves that by delivering 24/7 provision of hot drinks/toast/toilet/shower/clothes and washing facilities, space to rest and recover and access medical/mental health support and access to external professional support.
- 1625 Substance Misuse Outreach Service – the service is designed to deliver interventions to reduce harm around substance misuse and associated risky

behaviours for those in the 16 - 25-year-old group. The service works with individuals and groups of individuals across urban and rural communities in Derbyshire (excluding Derby city). The service is based on a pro-active outreach model requiring the service to work in partnership with a variety of local organisations in order to establish excellent links with 16-25-year olds where they reside, undertake education and socialise.

**Priority 4: Supporting those with mental health issues, including those with learning difficulties, who come into contact with the criminal justice system, as a victim or offender, to get the right support, from the right services at the right time.**

- Grant funding – A number of local grassroots organisations have been given funding to support their work in this area. Some of the organisations who have been successful in being awarded funds have included 'HeadHigh' which have ran a project aimed at providing a safe, friendly and supportive environment where people can talk openly about Mental Health. Go Wild in Wirksworth have received a grant previously to lead a project that supports those with mental health issues who come into contact with the criminal justice system as victim or offender. In addition, Ripley School of Boxing have been grant funded to run boxing sessions for young children and young adults. These sessions provide the opportunity for coaches to discuss general mental health concerns with participants.
- Mental Health Crisis Care Concordat (MH CCC) - The PCC has been an integral part of the MH CCC since its inception in 2014. The MH CC Concordat was launched by the Department of Health, Deputy Prime Ministers and Home Office in 2014. It is a joint partnership which covers what needs to happen when people in mental health crisis need help – in policy making and spending decisions, in anticipating and preventing mental health crises wherever possible, and in making sure emergency response systems operate in localities when a crisis does occur.
- The PCC financially contributes and co-commissions to the Mental Health and Covid Support Service and Helpline with the CCG, which prior to the pandemic aided blue light services between the hours of 8am and midnight 7 days a week. Officers and professional colleagues can contact the Hub for advice and guidance when attending incidents involving members of the public who were presenting in a mental health crisis and can request clinical attendance on-site and a mental health assessment.
- JET - The Joint Engagement Team (JET) was officially established in November 2018 using money from the Sustainability and Transformation Partnership (STP) fund; a follow up to the successful Street Triage scheme and the subsequent development of the Mental Health Triage Hub, this was a

partnership project between the PCC, the Deputy Chief Constable and the Chief Operating Officer of the DCHfT. The aim of the team is to collaboratively respond to the increasing demand a small number of patients are placing upon Blue Light Service and Health service resources, primarily those of the Derbyshire Constabulary and Derbyshire Healthcare Foundation Trust Mental Health services.

**Priority 5: *Working with young people, including those who have been either victims of crime or offenders, to understand their needs and prevent them becoming involved in criminal activities***

- Early Intervention Youth Fund - The Home Office launched a new fund back in late 2018 for projects aimed at preventing young people getting involved in serious violence including Knife Crime. The Commissioner supported three separate proposals from Derbyshire County Council, Derby City Council and the national charity StreetGames. These projects were successful in being awarded funding.
- Young People Engagement - The Commissioner's role includes working to develop new ways to engage with young people to understand their concerns about crime and community safety and use this feedback to further develop services. This work is undertaken by encouraging young people to complete the Commissioner's 'Listening To You' annual survey which helps inform him of young people's views and current concerns.
- Derbyshire CARES - Catch22 has been commissioned by the Office of the Police and Crime Commissioner for Derbyshire, Derby City Council and Derbyshire County Council to protect and support children and young people who are at risk of exploitation (CRE) in Derby and across Derbyshire. They deliver bespoke support and interventions to children and young people to build resilience and aspiration, empowering them to take control of their lives and supporting them to stay safe. The Office of the PCC is leading the contract.
- Streetgames - In 2015 we ran a sport and crime prevention programme, which was a partnership between 8 other PCCs, Network Rail, and StreetGames. This programme involved a commissioned evaluation by Loughborough University to identify the top 10 characteristics of community sports interventions and create an evidence base to support the view that this approach contributes to reducing youth offending and anti-social behaviour. Building on this initial work, a consortium submission was made to the Police Transformation Fund in 2017 on behalf of StreetGames by the Commissioner in conjunction with 26 other PCCs across England and Wales. StreetGames were successful in securing £451,712 to run a new programme (Safer Together through Sport) across these 26 areas until March 2020. This programme addressed 4 key aims: 1) To advance the understanding and use of sport as an effective means to tackle youth generated crime and anti-social behaviour 2) To create guidelines for effective early intervention strategies through best practice assessment 3) To create a referral framework model that brings together the youth justice and community sport sectors 4) To

support and influence smarter investment into youth & sport prevention activities.

**Priority 6: *Working with the constabulary to develop the policing family to be more representative of the diverse communities it serves.***

- Oversight & Engagement - The strategic leads for Workforce Planning (HR) and Inclusion have met regularly with the Commissioner to ensure he is kept abreast of significant developments and discuss progress being made in delivering strategic priority 6 within his Police and Crime Plan. In addition, the Chief Executive of the Office of the Police and Crime Commissioner (OPCC) is a member of the Constabulary led Valuing People, Valuing Difference (VPVD) Governance Board.
- On behalf of the Association of Police and Crime Commissioners (APCC) the Commissioner is the deputy lead for the Equality, Diversity and Human Rights (EDHR) portfolio. In addition, the Commissioner is the national lead for Hate Crime. These roles ensure the Commissioner has a prominent role in shaping policy and ensuring that concerns which are raised locally are fed into the national debate.
- A BAME Network in Derby ran for 18 months from 2018 and was initially set up by the PCC to enable a conversation with under-represented groups in Derby City, to gain feedback on policing matters and bring to the PCCs attention barriers to recruitment and careers within the Police Force.
- The PCC has been an active member of the BME Forum in Chesterfield for the last 12 months. This engagement is very welcome and creates an opportunity for the PCC's Office to build relationships with communities in the North of the County. The BME Forum is co-ordinated by Chesterfield Borough Council and Links CVS and has extensive representation. Topics for which the PCC has particularly engaged with the group have been Hate Crime, ICVs, recruitment and careers, mental health, budget, among others. The PCC has also funded an Innovations Fund project which several of the communities from the BME Forum collaborated on to raise awareness and encourage reporting of Hate Crime, and to support victims of Hate Crime.

**Priority 7: *Working with the constabulary and partners to maximise the opportunities from developments in technology***

- Introduction of drones – The drone team became fully functional back in 2019. The force has a number of trained pilots and drones available to deploy 24 hours 7 days per week across the county. The drones have night vision capability and have the functionality to record incidents.
- Mobile Office – Front line officers and staff are now equipped with mobile terminals to enable them to conduct many of their duties remotely which traditionally would have only been possible within a police station. The

enables officers and staff to be more visible and present in communities whilst undertaking their duties.

- National Enabling Programme – This has enabled new technologies including the rollout of Microsoft Office 365 to improve the processes in place for officers and staff within Derbyshire Constabulary and the OPCC. During the pandemic, through this rollout, Microsoft Teams has been implemented across the organisation which has enabled meetings to continue.
- Enhanced analytical capabilities – A new team embedded within Derbyshire Constabulary has been established to increase analytical capabilities to support the strategic priorities and meet the strategic threats faced by the force.
- Single Online Home (SOH) - is part of a nationally-driven programme to standardise public-facing police services, which offers a 'digital front counter' that will enable visitors to report crime and incidents as well as performing transactional services through the Derbyshire Constabulary website.
- Body Worn Video – Operational Police Officers are equipped with personal body worn cameras to record incidents to ensure vital evidence is captured which can be used to assist in bringing perpetrators to justice.
- The National ANPR Service (NAS) is new technology that replaced the existing national and local ANPR systems to create a single national data set. It has standardised Automatic Number Plate Recognition (ANPR) capability across Law Enforcement Agencies (LEAs).

In addition to the activity outlined above the office has continued to deliver on its statutory duties and has continued to be assessed as meeting its transparency duties by CoPaCC. The #D383 tour saw the PCC visiting all 383 towns/city and villages in Derbyshire, giving members of the public the opportunity to raise their concerns directly with the PCC.

## CASEWORK AND COMPLAINTS

The PCC continues to receive contact from the public either by post, in person, via the website or via third parties such as local MPs or local Councillors. We greatly appreciate it when people take the time to get in touch and we will always do our best to help with any issues raised. We are, however, sometimes constrained in what we can do when it comes to specific cases. The PCC is only allowed in law to deal with complaints against the Chief Constable; any complaints relating to other ranks must be dealt with by the Force. The PCC is responsible for ensuring that the Force runs an effective complaints process and to support this we dip-sample closed complaints, we also meet regularly with the Regional Director for the Independent Office for Police Conduct (IOPC) responsible for Derbyshire. Derbyshire continues to enjoy a good relationship with the IOPC and they continue to consider that Derbyshire has good systems in place, which is not to say that we will allow this to

make us complacent and we are always keen to keep an eye on best practice from other police force areas.

The following table sets out the numbers of pieces of casework the office has received during the year April 2020 to March 2021. This can be through members of the public writing in, emailing or contacting the office by telephone or brought back to the office following public events and visits.

There has been an increase of 24.3% year on year with casework, with a shift to email being the preferred method of contact. The single greatest increase in contact has related to police powers and this is mainly due to correspondence regarding coronavirus regulations during the various stages of lockdown and unlocking.

### CONTACTS:

Type of contact		Year on year change
Appreciation	17	+8
Complaint or dissatisfaction	151	+28
Crime report	31	+28
Feedback	139	+96
General enquiry	154	-26
Indecipherable	5	no change
Intelligence	14	-24
Not for Derbyshire PCC/Force	6	+1
<b>TOTAL</b>	517	+101

Reason for Contact		Year on year change
Abuse Suffered	23	-6
Acquisitive Crime	17	-4
Anti-social Behaviour	53	+13
Budget & Resources Issues	35	-10
Drugs & Alcohol	10	-6
Equality & Diversity	2	-9
Other	24	+17
PCC Matters	43	+17
Personnel Issues	2	-2
Serious & Organised Crime	1	+1
Service & Police Performance	233	+112
Traffic/Roads Policing	62	+4
Wildlife Crime	12	-26
<b>TOTAL</b>	517	

Method of contact		Year on year change
Email	492	+184
Letter	17	-85
Phone	6	-1
Social Media	1	-2

Appropriate Authority (who should reply)		Year on year change
Derbyshire Constabulary	257	+10
Police & Crime Commissioner	260	+91

## ISSUES RAISED:

Abuse (23)		Year on year change
Child Sexual Exploitation	0	no change
Domestic Violence	4	+3
Hate Crime	8	-1
Human Trafficking/slavery	0	-5
Safeguarding Concerns	9	+3
Sexual Violence	0	-8
Violence - other	0	+2

Acquisitive Crime (17)		Year on year change
Burglary, Robbery, Theft	10	+1
Cyber Fraud	2	no change
Fraud	5	-4
Proceeds of Crime Act	0	-1

Anti-Social Behaviour (53)		Year on year change
ASB - general	25	+4
Criminal Damage	0	-2
Harassment/Bullying	2	-2
Neighbour Disputes	12	+5
Noise & Nuisance	5	+4
Trespass/Unlawful gatherings	9	+4

Budget & Resources (35)		Year on year change
Budget/Precept	15	-3
Estate - police buildings	3	-7

Resources - allocation/reduction	17	no change
----------------------------------	----	-----------

Drugs & Alcohol (10)		Year on year change
Drug Supply/Dealing	6	-3
Drug Taking	3	-3
Licensing	0	-1
Street Drinking	1	+1

Equality & Diversity (2)		Year on year change
Equality & Diversity	2	-9

Other (24)		Year on year change
Indecipherable/unclear	13	+12
Not relevant/not for PCC	11	+6

PCC Matters (43)		Year on year change
Community Engagement	5	-2
Complaints against PCC	0	-1
PCC Role, costs, accountability	15	+13
Policy & Performance	1	no change
Political comments & opinions	17	+6
Victim services, commissioning & grants	5	+1

Personnel Matters (2)		Year on year change
Employment issues inc. pensions	2	no change
Work/work experience, student projects	0	-2

Serious & Organised Crime (1)		Year on year change
Serious & organised crime	1	+1

Service & Police Performance (233)		Year on year change
Contact & response time	12	-10
Data issues inc. DBS applications	1	-3
General policy & procedure	21	+9
General quality of service	19	-21
Performance & Crime Stats	4	-12
Police Complaint	78	+57
Police Powers	98	+92

Traffic/Roads Policing (62)		Year on year
-----------------------------	--	--------------



		change
Cyclists	1	-1
Drink/drug driving	0	-2
Off-roading/green lanes	4	+2
Other roads policing	22	-1
Parking	9	-3
Speed	26	+9

Wildlife Crime (12)		Year on year change
Wildlife Crime	12	-26

## CONSULTATION AND ENGAGEMENT

A total of **3,356** questionnaires were completed between April 2020 to March 2021.

Usually the survey would be promoted at various engagement events across Derby and Derbyshire in all local authority areas, including events at markets, hospitals, libraries, further and higher educational establishments, country fairs and similar.

However, due to the pandemic, no events were held this year and the surveys have all been completed online. The survey has been regularly promoted through various channels, including Facebook, Twitter, Derbyshire Alert, via partners, and through leaflets – to try to reach a wide variety of demographics and ensure as representative sample as possible of Derbyshire police force area residents.

Responses were received from 3,356 people, which equates to approximately one in every 300 residents of the Derbyshire Police force area having completed a survey during this 12-month period. The profile of respondents is broadly representative of the population of Derbyshire with regard to gender, age, residential location, ethnicity, and sexual orientation – although the number of responses from younger adults aged 18-29 years, males aged 30-39 years, and people from an Asian ethnic background was lower than desired, due to the limitations on face to face engagement during the pandemic - despite various attempts to reach these groups.

Surveys were completed by residents from across the whole of Derby and Derbyshire, with over 240 respondents from each of the nine local authority areas.

To ensure that valid comparisons can be made across the different demographics, and that results can be directly compared to past and future survey results, answers have been weighted by gender, age group and home local authority in line with the Census 2011 profile of Derbyshire.

Results calculations for each question are generally based on answers where the respondent has expressed an opinion only, i.e. “Don’t know / Prefer not to say” and blank answers have been excluded unless specified.

Particular issues of note from individual questions are as follows:

### **Questions 2 & 3. How safe do you feel walking alone in your local area during the day and after dark?**

Results show that 89% of people feel either very safe or fairly safe walking alone in their local area during the day, with this falling to 49% feeling safe walking alone after dark – the latter is lower than last year, but similar to 2018/19.

Results for feeling safe during the day are generally fairly similar (87-92%) throughout the various demographics, apart from respondents who: are Gay, Lesbian, Bisexual or Other sexuality [LGBO]; and/or consider themselves to have a disability - where results were lower (80-81%).

However, there is considerable variance for feeling safe after dark. Females, respondents who are Gay, Lesbian, Bisexual or Other sexuality [LGBO] and those who consider themselves to have a disability were the least likely to say they felt safe walking alone after dark, whereas males and those living in Derbyshire Dales were the most likely to say they felt safe.

In comparison, CSEW results for the 12 months to the end of March 2021 show 82% of persons nationally felt safe when walking alone after dark (males 91%, females 73%), which may suggest that people in Derbyshire have a higher fear of crime, as Derbyshire’s crime rates are lower than the national average.

### **Question 4. How worried are you about being a victim of the following types of crime?**

The proportion of people being very or fairly worried about property crimes (burglary, robbery, car crime) have all risen slightly compared to last year, even though, due to lockdown and other restrictions, property crime fell considerably. Younger people (under 25 years) were less worried about burglary and car crime than middle aged and older respondents.

There does appear to be a higher fear of property crime in Derbyshire compared to the country as a whole – the Listening To You survey 2020-21 has 14.0% of respondents being very worried about burglary and 17.5% of respondents being very worried about car crime, compared to the CSEW national figures for the 12 months to the end of March 2020 (latest data available) of 9.9% and 6.8%.

Being caught up in a terrorist attack was the only issue where young people under 18 years were more worried than older people. Respondents from Asian/Black/Mixed/Other ethnic groups, and those who consider themselves to have a disability were the most worried about this issue. However, overall levels of worry about a terror attack have decreased by around more than a third (29% to 17%) since 2017/18.

Levels of worry about fraud are similar to last year, even with the media focus on scams and deceptions related to coronavirus, particularly cyber fraud, during the pandemic. The fear of being a victim of fraud increases considerably with age – over 50s are more than twice as likely to be worried about fraud than young people.

Those who consider themselves to have a disability were considerably more worried than average about being a victim for all five of the crimes asked about in the survey.

**Question 5. In Derbyshire we have a dedicated website to provide a ‘one stop shop’ of help and support for victims of crime and antisocial behaviour? Are you aware of the CORE website?**

Around 1 in 9 respondents said they were aware of the website, although there was some variance across the different demographics.

**Question 6. Do you think that your local police are dealing with the issues that matter to your community?**

More than three in five (63%) respondents did feel that their local police are dealing with the issues in the community, the same as last year. Respondents from Asian/Black/Mixed/Other ethnic groups, residents of Derby, younger people (29 years and under) and older people (70 years and over) were the most likely to agree.

**Question 7. Taking everything into account how good a job do you think the Derbyshire police are doing?**

The proportion of respondents (53%) who feel that Derbyshire police are doing an excellent or good job is similar to last year (54%).

The overall result is below the national CSEW figure for the 12 months ending March 2020 where 67% of people think the police are doing an excellent or good job.

**Questions 8 & 9. Before completing this survey, were you aware of Police & Crime Commissioners? Do you know the name of your Police & Crime Commissioner?**

As may be expected, knowledge of the role of Police & Crime Commissioner and the name of the Derbyshire Police & Crime Commissioner increases with the age of the respondent. The overall level of responses, 74% for awareness of the role and 40% for the name of the Commissioner, are similar to previous years.

## Respondent Location

	Number of questionnaires Listening To You 2020-21 (figures in brackets previous year)	
<b>All Respondents</b>	<b>3,356</b>	<b>(4,897)</b>
Amber Valley local authority area	353	(611)
Bolsover local authority area	265	(571)
Chesterfield local authority area	248	(342)
City of Derby local authority area	604	(766)
Derbyshire Dales local authority area	392	(499)
Erewash local authority area	334	(521)
High Peak local authority area	495	(717)
North East Derbyshire local authority area	411	(485)
South Derbyshire local authority area	254	(373)
Unknown/Blank	0	(12)

## Feeling Safe

*How safe do you feel walking alone in your local area during the day?*  
(3,344 responses)

	2020/21	2019/20
Very Safe	44.3	44.3
Fairly Safe	44.7	42.7
A bit unsafe	8.8	9.6
Very unsafe	2.2	3.5
Total 'Safe'	89	87
Total 'Unsafe'	11	13

*How safe do you feel walking alone in your local area after dark?*  
(3,291 responses)

	2020/21	2019/20
Very Safe	11.2	12.6
Fairly Safe	37.7	37.7
A bit unsafe	32.5	31.4
Very unsafe	18.6	18.3
Total 'Safe'	48.9	50.3
Total 'Unsafe'	51.1	49.7

### **Fear of Crime**

*How worried are you about being a victim of the following types of crime?*

a) *Having your home broken into and something stolen?*  
(3,332 responses)

	2020/21	2019/20
Very worried	14	19.4
Fairly worried	37.1	36.6
Not very worried	40.1	34
Not at all worried	8.9	9.9
Total 'Worried'	51	56
Total 'Not-worried'	49	44

b) *Being mugged or robbed?*  
(3,331 responses)

	2020/21	2019/20
Very worried	11.8	13.5
Fairly worried	28.4	29.1
Not very worried	46.2	42.6
Not at all worried	13.6	14.8
Total 'Worried'	40.2	42.6
Total 'Not-worried'	59.8	57.4

c) *Having your vehicle stolen or vandalised?*  
(2,521 responses)

	2020/21	2019/20
Very worried	17.5	21.3
Fairly worried	35.4	34.6
Not very worried	36.7	32.3
Not at all worried	10.4	10.6
<b>Total 'Worried'</b>	<b>52.9</b>	<b>55.9</b>
<b>Total 'Not-worried'</b>	<b>47.1</b>	<b>42.9</b>

d) *Being caught up in a terrorist attack?*  
(3,296 responses)

	2020/21	2019/20
Very worried	6.8	10.1
Fairly worried	9.9	14.8
Not very worried	37.5	38
Not at all worried	45.8	37.1
<b>Total 'Worried'</b>	<b>16.6</b>	<b>24.9</b>
<b>Total 'Not-worried'</b>	<b>83.4</b>	<b>75.1</b>

e) *Being a victim of fraud or identity theft?*  
(3,307 responses)

	2020/21	2019/20
Very worried	19.6	19.8
Fairly worried	39.4	37.7
Not very worried	30.9	30.2
Not at all worried	10.2	12.3
<b>Total 'Worried'</b>	<b>59</b>	<b>57.5</b>
<b>Total 'Not-worried'</b>	<b>41</b>	<b>42.5</b>

### Community Policing

*Do you think that your local police are dealing with the issues that matter to your community?*

(2,829 responses)

	2020/21	2019/20
Yes, definitely	10.9	12.6
Probably	52.4	43.7
Probably not	23.1	24.6
Definitely not	13.5	19
<b>Total 'Yes'</b>	<b>63.4</b>	<b>56.3</b>
<b>Total 'No'</b>	<b>36.6</b>	<b>43.6</b>

## Derbyshire Police

*Taking everything into account, how good a job do you think the Derbyshire police are doing?*

(3,014 responses)

	2020/21	2019/20
Excellent	11.3	10.9
Good	41.5	36.3
Fair	33.3	33.1
Poor	9.2	12.4
Very Poor	4.7	7.3
Excellent/Good	52.8	47.2
Poor/Very poor	13.9	19.7

## The Police & Crime Commissioner

*Before completing this survey, were you aware of Police & Crime Commissioners?*

(3,080 responses)

	2020/21	2019/20
	%	
Yes	73.7	72.3
No	26.3	27.7

*Do you know the name of your Police & Crime Commissioner?*

(3,187 responses)

	2020/21	2019/20
	%	
Yes	39.8	38.4
No	60.2	61.6

We will continue to analyse this data to understand the concerns of individuals and communities and to help inform our oversight of the Force and any grant making and commissioning activity we undertake.

Based on this data it is good to see that a clear majority of people still consider that Derbyshire Constabulary are dealing with the issues that matter to communities and believe that the police are doing a good job.

## INDEPENDENT CUSTODY VISITORS SCHEME

Independent Custody Visiting is intended to counter any mistrust of the Police in the local community and reassure the public that people detained in Police custody are being given access to their rights, are detained in satisfactory conditions and are having their health and well-being needs taken care of. I would like to take this opportunity to formally record my thanks to all of those involved in the scheme. It is a vitally important job that they do to ensure that when people are held in custody they are done so with dignity and respect. It is a statutory responsibility of the Police and Crime Commissioner for Derbyshire to have in place an Independent Custody Visiting Scheme. Members of the public from Derbyshire volunteer to attend Derbyshire Constabulary's custody suites to speak with people detained in police custody, raising any issues with custody staff in order to resolve them quickly.

During the year of 2020-21, the Scheme had 24 Independent Custody Visitors (ICVs), 10 of these were new recruits who didn't start until January 2021. Derbyshire Constabulary were operating three custody suites during this period. Each suite is designated to hold detained persons 24 hours a day, seven days a week, 52 weeks of the year. The locations of these suites in the county are Chesterfield, Ripley and Derby. For the purposes of the ICV scheme Derby is classed as the South area and Ripley and Chesterfield are both classed as the North area. New ICV are allocated to visit in either the North or South of the county when they join the scheme; allocation being based on how close the custody suites are to their home address.

Due to the unprecedented global pandemic, physical custody visits were suspended between 16<sup>th</sup> March 2020 and 18<sup>th</sup> May 2020. Visiting resumed in a virtual form from the 19<sup>th</sup> May.

Our ICV's conducted 90 visits during 2020/21. Breakdown as follows:

Q1: 38  
Q2: 27  
Q3: 25  
Q4: 0

In Derbyshire, we developed and continue to operate a scheme called the Custody Record Reviewing (CRR) process, and really value the wealth of data it provides. CRRs involve our ICVs retrospectively reviewing custody records and reporting on access to and timeliness of custody processes, safeguards and overall record keeping. Ordinarily, our ICVs would come to HQ to review the redacted custody records, but when the Covid-19 pandemic struck we had to adapt the way our volunteers reviewed the records. Initially, OPCC staff conducted the CRRs as a temporary measure to maintain oversight of custody, during an unprecedented and difficult time for all involved. However, Independent Custody Visiting is just that-independent. Members of our communities give up their time to ensure the welfare of people who find themselves in police custody, and this independence is key to the reassurance ICV schemes give our communities that custody is operating as it should. We needed to get our ICVs back to reviewing records, and in true pandemic style, remote working was the way forwards. We found a technical solution called Egress that would meet data protection and security needs. Egress is a secure



document sharing platform which allows us to upload custody records for ICVs to view in read-only format behind a password barrier. ICVs create a free account to access documents shared with them and each record can be restricted so that only the allocated pair of reviewers can access it. The ICVs simply follow the link we send them, log in and read the records- they cannot edit, download, save or manipulate the document in any other way.

By using the Egress system to view custody records, it has given the OPCC and our volunteers complete flexibility. One has commented that they feel they have less pressure reviewing the records via this method, compared to reviewing with a partner in our force Head Quarters, where there was a timeframe in place for completion. Reporting is done by survey software, so this too can be done from home, and ICVs still enjoy the social aspect of volunteering by chatting to their review partner on video call to discuss their findings. Our volunteers no longer have to add travel time on to their CRR volunteering commitment, it meant we could operate the system during national and local COVID-19 restrictions/lockdowns and we are contributing towards reducing our carbon footprint.

Our volunteers reviewed 364 custody records, covering our key focus of young people and immigration within the custody suites.

## COMMISSIONING & GRANTS

The PCC continues to be responsible for the commissioning of support services for victims of crime and the past twelve months has seen the continued development and refinement of the PCC's commissioning model. The PCC has continued to work with partners wherever possible to co-design and co-commission services, providing a more stable funding arrangement that is not reliant upon a single funder. This also prevents the duplication of services and ensures that the limited financial resources available are used to maximum effect and deliver value for money.

The PCC has continued to support the work of the Community Safety Partnerships (CSPs) by providing a secure, multi-year funding stream to allow the partnerships to properly plan and develop workstreams to tackle issues of anti-social behaviour and lower level criminality that affects local communities. This is practically the only funding going into CSPs and is a practical demonstration of the PCC's belief in the important role CSPs play in tackling issues at a local level.

The PCC has continued to support the development of the Mental Health hub, located within the Force's contact centre and continues to work with partners from health and the East Midlands Ambulance service to further develop and secure this model that sees those contacting the police who are in some kind of mental health crisis being assessed and supported by professional qualified mental health practitioners, rather than police officers.

The following grants have been made over the past 12 months:

**Small Grants**

Project Name	Provider Name	Contract Value	Brief Summary of Project
	People Express	£2,500	<p>The music project will identify and work with young people who have been or are at risk of being victims of crime or young people who have offended or who are at risk of offending.</p> <p>The music project will also develop positive peer to peer networks, positive activities, developing skills and confidence, particularly for young people with learning disabilities and enable them to share their music work to inspire other young people.</p>
Community Showground	Grassmoor Perseverance Allotments	£2,140	<p>To purchase new solar panels to facilitate the following:</p> <ul style="list-style-type: none"> <li>○ To expand the range of the existing small scale solar powered lighting system which will increase the visibility of the allotments site.</li> <li>○ To attract more community groups as a result of increased security measures.</li> </ul> <p>To replace the existing notice boards in order to share information with locals, such as:</p> <ul style="list-style-type: none"> <li>○ To raise awareness of events in order to achieve higher attendance.</li> <li>○ To raise awareness of local crime prevention and the CoRe services.</li> </ul>

**Large Grants**

Project Name	Provider Name	Contract Value	Brief Summary of Project
ASD Community Project	Active South Derbyshire	£25,000	<p>To provide the following activities within Stenson Fields, Swadlincote/Urban Core, Hilton, Melbourne and the Seals:</p> <ul style="list-style-type: none"> <li>o Street Games/Doorstep Delivery</li> <li>o Youth Group Development</li> <li>o Mentoring Scheme</li> <li>o Volunteer identification and development</li> </ul>
Commando Joes	Cavendish Learning Trust	£17,995	<p>To work with small groups before, during and after school and deliver the Commando Joe programme to 60 targeted young people from Year 7 – 11 (which includes 12 who are identified as the most vulnerable children in school).</p> <p>To develop 'Co Joes' and teach the children to lead activities for younger pupils at lunchtimes and after schools</p> <p>To explore opportunities for careers and further education in the armed forces with the cohort</p>
STAND TO	DAAS – Derbyshire Alcohol Advice Service	£16,352	<p>To undertake a feasibility study across Derbyshire primarily and initially focussing on the North of the county to explore the current pathway for veteran offenders within the CJS.</p> <p>To involve the secondment of a veteran worker who will have experience of both the Criminal Justice System and or alcohol/substance misuse who will engage with policing divisions, probation services, custody workers, outreach substance misuse teams, and hospital liaison teams to find out how current services meet the needs of veteran offenders, how they link with CJS, the pathways that are in place, the services available for support and how best to work with partners to reduce the numbers of veterans entering the criminal justice system.</p>
DEAF	Deaf-	£25,000	To support service users by an IDVA trained deaf female Personal Support

Project	initely Women		Navigational Worker on a one-to-one basis (PSN) and to support deaf and hard of hearing women to report matters to the Police and / or access mainstream (Domestic and Sexual abuse) services.
Wild Wellbeing	Derbyshire Wildlife Trust	£24,865	<p>Using the principles of the 5 Ways to Wellbeing Derbyshire Wildlife Trust will run a structured programme of activities over a 6 week course.</p> <p>To address loneliness and anti-social behaviour in young people by engaging them with the natural world through the Wild Wellbeing programme, the programme develops personal and practical skills, emotional resilience and helps attendees acquire new skills and build better relationships.</p> <p>To provide conservation activities, exercise, developing creativity and building team working skills to allow young people to widen their perspectives, build self-esteem and confidence and raise aspirations about their role in their local communities and wider society.</p>
	Ukrainian Catholic Church	£4,000	The Ukrainian Catholic Church will purchase Security Lighting, Cameras and replacement of two damaged doors, in order to prevent inappropriate or unlawful use of the church grounds and prevent damage to church buildings, including the hall and bungalow.

**'Vulnerability Fund' Rounds 1 & 2**

Contract Name	Provider Name	Contract Value	Brief Summary of Project
Fairfield Community Partnership HUB	Residents of Fairfield Association	£24,000	The already established community hub which is the Residents of Fairfield Office (ROFA), will be developed into a multi partnership hub where several agencies will utilise the facility for both operational and community engagement. The aim of this part of the project is to make agency staff more accessible and visible within the community, to enable them to be closer to the community to be reactive to their needs.
Sacred Bean Training Academy	Sacred Black Bean Coffee CIC	£24,000	To fund a speciality coffee roasting community interest company, providing training, volunteering and employment opportunities for people overcoming life-controlling struggles such as homelessness, substance abuse and criminality. This is based in Chester Green, Derby.
Recovery Plus	The Brook	£24,000	To work alongside people within the community who have been homeless, have addictions or have vulnerabilities. Working with the drug and alcohol service to address long term drug and alcohol misuse and the negative impact this can have on lifestyles, health and communities. In addition, conducting a pilot of "recovery phones". These are low cost phones and limited sim costs for those engaging with the service. It provides a life line for those who do not have a stable form of communication.

Melbourne Sporting Partnership	Melbourne Sporting Partnership	£3,500	<p>To install a CCTV system at Melbourne Sports Centre for the following reasons:</p> <ul style="list-style-type: none"> <li>• To reduce Anti-Social Behaviour within the vicinity of the Centre</li> <li>• To provide a visible deterrent and prevent criminal damage to members vehicles and to the club facilities.</li> <li>• To increase the number of site users who will be able to participate in</li> </ul> <p>To purchase and install CCTV cameras, recording equipment and signage to protect the local community and amenities at Aston on Trent's recreation centre, playing fields and car park.</p>
Protecting our Community Pavilion for all	Recreation in Aston	£4,575	<p>To purchase and install CCTV cameras, recording equipment and signage to protect the local community and amenities at Aston on Trent's recreation centre, playing fields and car park.</p>
Saffron Kitchen	Asian Association of Chesterfield and North Derbyshire	£3,768	<p>Installation of security cameras on-premises to increase safety for staff, volunteers and assets within the premises.</p> <p>Cyber Security activities (staff costs) to help reduce incidence of cybercrime amongst elderly members, service users and local residents</p> <p>To improve the safety of elderly and vulnerable service users by providing our staff with clearly marked uniforms, name badges and high visibility work wear.</p>
Spondon Safety 2020	Safer Spondon	£4,325	<p>Raise the profile of Safer Spondon and SNT by producing and collaborating on safety advice leaflets quarterly which will include promotional items to be collected at safety events. Continue to support Spondon VIP coffee mornings and reduce vulnerability by offering reassurance and confidence to the local residents</p>

Safety and Security Upgrade Project	Faizan e Madina Derby Mosque	£14,500	<p>Increase the security at the mosque to include:</p> <ul style="list-style-type: none"> <li>• metal galvanised security fencing around the perimeter of the premises,</li> <li>• security electric sliding gates at the entrance and exit,</li> <li>• security lighting at the entrances to the car park and the at entrances to the building &amp; CCTV security system.</li> </ul>
Charles Hill Sports & Community Pavilion	Charles Hill Centre	£25,000	<p>The whole project involves the construction of a single storey sports and community pavilion, comprising a community hall (which can be sub-divided into two square rooms), two match officials changing rooms, toilets and refreshment facilities.</p> <p>The building is designed to be fully accessible to people with disabilities and wheelchair users. The pavilion will also be 'home' to other local community groups in need of a local meeting place. The building will facilitate engagement with the community, providing a much-needed safe and secure venue for recreational, social, sports and leisure together with educational training, health and well-being activities, which will be available for use during the day and evenings by local community groups.</p>
Safety, Security & Beyond	Tell Mama	£21,000	<p>The project, in partnership with Derbyshire Police, will look at providing a number of taxi drivers with CCTV systems (dashcams) that will evidence and showcase any abuse or hate crime that taxi drivers are being subjected to, taxi drivers will also be provided with guidance and guidelines for the use of CCTV systems that are used to prevent and detect crime; and enhance the health, safety and security of both taxi drivers and passengers.</p>
A Safe Secure Women's Space	Womens Work Derbyshire	£8,800	<p>To implement the following measures to increase security and safety, act as a deterrent and protect all users of the premises as well as the building and its contents.</p>

	Ltd		<ul style="list-style-type: none"> <li>• To fit security grills on the downstairs windows</li> <li>• To update the current burglar alarm and a personal alarm within the premise</li> <li>• Security lighting around the perimeter of the building</li> <li>• CCTV security system</li> </ul>
Security / Anti-Vandal Measures	Bolsover Methodist Church	£14,000	<p>To install CCTV cameras around the vicinity of the building to attempt to capture Photographic evidence of any attempted vandalism.</p> <p>To install Security lighting to act as a deterrent.</p> <p>To Install Anti-vandal paint applied to act as a deterrent.</p> <p>To install a 'Spinner' to prevent access to roof and resultant criminal damage.</p>
Aspire Roof and Heating Project	Aspire Wrestling Alliance Ltd	£18,500	<p>To repair the roof of the community building which is the base for the organisation's varied community activities and to install heating so that the facility can be used safely all year round by both staff and volunteers.</p> <p>This will safeguard the ability to continue with the many and varied current projects and will allow scope to start some new ones. Across the current projects Aspire (in non covid times) is supporting around 2000 people a month and the majority of those among the most vulnerable in the local area. The organisation has played a central role during the recent pandemic supporting extremely vulnerable members of the local community.</p>



Community Gardening Service	Grow Outside CIC	£9,400	<p>This project will provide a gardening service in and around Swadlincote, staffed by volunteers. The project has dual benefits;</p> <ul style="list-style-type: none"> <li>• a number of partners in the South Derbyshire area have recently reported their own or residents' concerns about overgrown gardens. The negative impact of these specifically relates to community safety. By addressing this issue, it will reduce the fear of crime and improve community cohesion.</li> <li>• the volunteer workforce carrying out the jobs will be identified from the local unemployed, volunteer and job- seeker market.</li> </ul> <p>The project aims to contribute to tackling the negative impact of covid in the area, demonstrated by the number of job losses – which has led to higher numbers of universal credit claimants and under-occupied local workforce – as well as increased fear, vulnerability, loneliness and isolation through reduced social contact in public spaces.</p>
Youth Hub	Ripley Town Council	£10,000	<p>A weekly youth hub will be held every Wednesday evening at Greenwich park community room for youngsters aged between 11 and 18 years of age.</p> <p>The activities provided will include table tennis, educational games, information and help regarding social media, learning to cook basic meals. Sessions will be held by Youth Workers on sex education, substance misuse and safety and wellbeing. In the summer during holidays outdoor sports will be provided - coaching, football, cricket and other sport activities.</p>

<p>Helping the Young &amp; Vulnerable TMWA Project 2020/2021</p>	<p>The Muslim Welfare Association of Chestfield and North Derbyshire</p>	<p>£14,250</p>	<p>Provision of a support network for members of the community who have recently or in the past been the victim of any crime which they find difficult to report or talk about primarily because of a deep mistrust of law enforcement authorities or because there are cultural or language barriers to overcome. Provision of a safe environment and a platform for community members to feel comfortable about requesting help.</p>
<p>Un - Aware</p>	<p>Artcore Limited</p>	<p>£19,000</p>	<p>A weekly 2-hour professional artist led session starting in March 2021 to help bring vulnerable BAME residents out of lockdown. Sessions will be either in person with social distancing in place or online via zoom. Outreach taster sessions will be offered initially at Sahara, Hindu temple, Indian community centre, derby west Indian community association, derby homes and metropolitan housing sites. Once levels of confidence have increased sessions will move to the Charnwood street premises, which are Covid secure. Sessions will include a mixture of activities: creative art, mindfulness, knitting, chair-based exercises and coffee mornings. Sessions will be aimed at supporting vulnerable people to safely come out of lockdown and connect/engage with others.</p>
<p>Fight Back from Crime</p>	<p>North of Englands Ozboxing</p>	<p>£15,000</p>	<p>This project links offenders or those at risk of offending with an opportunity to change their lives, gain a nationally recognised qualification and/or to participate in meaningful activity, volunteering, training, upskilling and other interventions which are geared to change or prohibit offending behaviours and afford those who are reachable within the community to see a different path. Engagement will take place with individuals who fit the program whilst they are in custody or on their release. Work will take place with the local community, schools, education providers, headquarters and neighbourhood force in our area, safer neighbourhood teams, MATs and others to connect and offer opportunities to those individuals beginning offending behaviours</p>

<p>Life Skills Crime Prevention Project</p>	<p>The Bureau</p>	<p>£24,000</p>	<p>The project's focus is on the provision of personal development support and training to vulnerable people living in the Glossopdale area who, because of their vulnerabilities, have an increased likelihood of becoming victims of crime; particularly because of the extra pressures they face from the restrictions associated with the COVID pandemic.</p> <p>The project will be run in partnership with the local police and has their full support. Through a series of group and individual interventions the participants will gain the skills, knowledge and self-awareness to better assess, and then avoid, or minimise, personal risk.</p>
	<p>The Bemrose School</p>	<p>£4,100</p>	<p>Music production - to create a piece of musical art and capture this with visuals. The students selected will be those who have poor attendance at school, who truant, are at risk of exclusions and anti-social behaviours. The art created will be age appropriate and based around the effects their community has on them. We will run 3, 6-week programmes with a year 7, 8 and 9 bubbles.</p>
<p>We Can Change - group work for young people at risk of harming other</p>	<p>Crossroads Derbyshire</p>	<p>£24,726</p>	<p>Funding to continue and expand the "We Can Change" project. This work will be delivered in collaboration with other partners - Derbyshire Wish and the Elm Foundation. It will run as a group project in high schools across the county, and will work with young people aged 11-19 who are showing signs of perpetrating abuse within their intimate relationships or towards family members.</p> <p>The intention is to help young people avoid becoming involved with the criminal justice system as a consequence of their behaviours. The project will focus on safety within relationships, online activity, building self-esteem and confidence, personal safety, and developing strategies to avoid conflict and manage anger. There will also be an element focusing on young people with learning difficulties and their understanding of consent and healthy relationships.</p>

	Staywell Derby CIC	£24,000	Staywell is led by Directors with lived experience of mental-ill health, trauma, crime, victimisation, addiction, and homelessness. As such, there is a unique understanding of the complexities and difficulties of living with any of these issues and the existing barriers to recovery. The aim is to support Derby's most vulnerable people by drawing on collective experiential knowledge, best-available evidence, and links with existing organisations. Staywell's ethos is proactive, user-led and community-focused. It is the organisation's aim to support people to break downward cycles of mental ill-health, poverty, addiction and crime.
Carers Social Connectedness Project	Derbyshire Carers Association	£12,000	To provide a service to compliment a very successful telephone befriending service for vulnerable socially disadvantaged adult carer's, to provide face to face social connection and support and buddying to connect them with their local community, society and support services. Post lockdown this will be particularly crucial as the pandemic has had extreme consequences for some of the most isolated and vulnerable carers. A part time member of staff as social connector co-ordinator who will recruit local volunteers. Carers who are rurally and socially disconnected, lonely, isolated, vulnerable, afraid and unable to leave the "cared for" will be supported through a referral process.
Youth Ambassador Scheme	BLM: NEW GEN	£10,000	The project aims to enable more young people to get involved with and make their impacts on the 'Black Lives Matter in Derby' movement, all while boosting their own CV's and gaining valuable skills sets to take forward in their future careers and endeavours.  The Youth Ambassador Programme is open to all within the age bracket of 16 - 21yrs, however, is set to target members of the black and BAME Community - in order to make a direct difference to these targeted communities and enable networking opportunities that may not have been available otherwise.
Security Protection for Darley Abbey	63rd Derby (Darley Abbey)	£2,500	The project will facilitate the installation of a comprehensive CCTV System within the hall grounds, installation of a comprehensive burglar alarm system, with contacts on all external Doors, and alarm sensors in critical areas.

Scouts Hut	Scouts		
K.O Crime @ Allenton Boxing Academy	Allenton Boxing Academy	£10,000	The project will strategically link offenders or those identified as at risk of offending with an opportunity to change their lives, gain a nationally recognised qualification and/or to participate in meaningful activity, volunteering, training, upskilling and other interventions which are geared to change or prohibit offending behaviours and afford those who are reachable within the community to see a different path.
Derby Racial Equality Council	Black Community Matters (BCM) & Open Doors Forum (ODF)	£10,000	The project will employ four young people and up to 30 volunteers to become trained ambassadors. Youth ambassadors will undertake outreach work and run a multi-media project (including a podcast) to express/air/discuss their views/experiences.
Your Space Project	British Red Cross	£24,978.41	The Your Space project provides 4 working days of accommodation, specialist advice and material support to potential victims of Modern Slavery and Human Trafficking (MSHT) immediately after they have left exploitation. The service will give 20 victims the time and space that they need to make informed decisions about their next steps, including the National Referral Mechanism (NRM) and alternative support options.
BLAST CLUBS	Building Lives Around Shirebrook Town	£18,000	The project will support local people to co-design and co-produce local activity within Shirebrook. BLAST intend to provide activities and employ local people to facilitate meaningful and purposeful projects in the community.

DISC implementation	Cathedral Quarter Business Improvement District (BID)	£6,500	To project will work with businesses in the BID area to reduce crime and co-ordinate an online crime reduction scheme through partnership working. The scheme will be used to share information in more depth and swiftly via the DISC system, to allow retailers to disrupt, deter and prevent crime. Data collated can be used to highlight hot spots, particular issues and persistent offenders in and across different areas as well as looking at enforcement resource in hotspot areas.
As Safe As Houses project	Deaf-initely Women	£20,000	The project will employ a hard of hearing/deaf/deafblind woman to work as an 'As Safe As Houses Home Security Adviser' to carry out home visits to assist deaf, deafblind and hard of hearing women to feel safe and secure.
Keeping DWICA & Community safe	Derby West Indian Community Association	£2,880	The project will upgrade the CCTV facilities of the centre and allow staff to take part in a personal safety workshop delivered by Oakwood House Training. The course will explore Personal Safety, Conflict Management and Lone Working.
Making Elvaston Safe and Secure	Elvaston Cricket Club	£1,400	The project will facilitate the improvement of security within the grounds to prevent equipment from being stolen or damaged.
Not today, she said	Evergreen Collective	£18,000	The project 'Not today, she said' will provide an uplifting and empowering campaign that highlights the need for British Muslim women to be confident in their identity and speak out when they need to. This will also include Workshops and activities for women based on resilience, confidence and empowerment. This area will also consist of self-defence classes. And finally a support network and group for women that have experienced any form of Islamophobia or bias for being Muslim and a woman. The support group will also allow signposting to other organisations that may be able to help the women further.

Vehicle for farm-based skills-projects	Good News Family Care (Homes) Ltd	£21,000	The project will facilitate Farm-Based Skills Development/Social Enterprise Training situated in the Goyt valley to more people within High Peak, Derbyshire.
2021 Summer program of activities	Grassmoor and Hasland Youth and Children Support Group	£3,000	The project will deliver a six-week program in the summer holidays in two localities (Grassmoor and Hasland). The planned offer includes four multi-sports sessions per week for the entire six-week holidays, and one 'Extreme Wheels' session per week - climbing wall, body zorbing, wheeled activities etc. The activities will take place on local parks and be led by Samba Sports, with support from volunteers. The participants will be provided free food from the 'holiday hunger' offer via Fareshare funding
Restore	Jacob's Well (Derby)	£12,000	The project will support women working in the sex industry, both on street and within private accommodation. The aim is to provide immediate support whilst women are working, in the form of refreshments, condoms, National Ugly Mug alerts, signposting to relevant services, and a safe and friendly space on the streets. In this way the project provides emotional, physical, spiritual, and social support to some of the most vulnerable members of society.
CCTV	Melbourne Assembly Rooms	£6,300	The project will facilitate the installation of CCTV at the Melbourne Assembly Rooms (MARs) and whole site in South Derbyshire.
Community Advisory Service	Pakistan Community Centre	£22,500	The project intends to address deprivation and social exclusion which has been exacerbated by Covid-19. The project will provide culturally specific community support services by recruiting a Community Support Officer. The proposed officer's role is vital to provide IAG, signposting and a complimented needs-based counselling service.
Connect Against Crime	PcRefurb	£22,500	The project will work alongside statutory and community-based organisations to provide refurbished I.T. equipment and crime safety advice to vulnerable people, families and community groups in the High Peak, thereby bridging the 'digital divide'.
Project Nova	RFEA – The Forces	£18,000	The project proposes to deliver across Derbyshire, working with the constabulary to support vulnerable veterans who enter into the criminal

	Employment Charity		justice system, to address the impact of drugs, alcohol and mental health by providing emotional and practical support with an aim to reducing reoffending.
Rhubarb Resilience	Rhubarb Farm CIC	£18,500	The project proposes to employ a Training Manager to deliver a range of training courses, awareness workshops and skills development to the vulnerable people that Rhubarb Farm works with.
Roma Alliance Derby	St James Centre	£20,000	The project will use community friendly Active Re-engagement and Consultation to: <ol style="list-style-type: none"> <li>1. Identify the areas of vulnerability as experienced by the Roma Community in Derby</li> <li>2. Work with Roma people to create practical interventions that will reduce basic needs and strengthen the Community</li> <li>3. Reduce the likelihood of the Community becoming the victims or perpetrators of crime</li> <li>4. Work with the Community to help them become more settled, prosper and make their contribution to the life of Derby.</li> </ol>
DISC implementation	St Peters Quarter Business Improvement District (BID)	£3,000	The project will work with businesses in the BID area to reduce crime and co-ordinate an online crime reduction scheme through partnership working. The scheme will be used to share information in more depth and swiftly via the DISC system, to allow retailers to disrupt, deter and prevent crime. Data collated can be used to highlight hot spots, particular issues and persistent offenders in and across different areas as well as looking at enforcement resource in hotspot areas.
Zink Community Hub	The Zink Project CIO	£20,000	The project will facilitate the creation of a new community hub in Buxton which is open to all, but targeted at people made unemployed, isolated or experiencing poor mental health because of lockdown in addition to Zink's usual clientele who are generally experiencing poverty or isolation because of unemployment, addiction, age, ill health, criminal record, disability, homelessness, unemployment, lack of family support/social network.
Redevelopment of Town Head	Tideswell Parish	£7,500	The project will refurbish Town Head Park as a means of facilitating a focal meeting point for children and their parents, a safe space to play



Park	Council		and to host events (such as storytelling circle as part of the Community Orchard programme). The project intends to replace outdated play equipment, provide a picnic area and some designated space for sport and exercise.
CCTV – WHITTINGTON LANE PARK	Unstone Parish Council	£8,000	The project will provide updated CCTV to one of the public children's play areas which will assist in the prevention of both crime and drug abuse. It should also make anyone using the park feel more safe and secure whilst enjoying the facilities with their families.
The Sikh Soldier Film	Windows Zebra Productions	£10,000	The project will produce a non-for profit WW1 short film with a Sikh soldier as its lead character to help improve education, representation and awareness of the Sikhs' involvement in the Great War. Ultimately reducing hate crime for the present and future for the Sikh communities of Derby.
Clubhouse	Wingerworth Junior Sports Association	£10,000	The project will create a modular facility that includes changing rooms, a clubhouse and space for a youth club for young people aged 6-18. This will promote and encourage wellbeing, fitness interaction in a safe and supportive environment.
Cemetery Road Community & Sports Hub	Glossop North End Community Club	£10,000	The project involves the new build of a community and sports hub and the construction of a 3G pitch. The project hopes to improve the physical and social wellbeing of residents in Glossop and the surrounding areas, in the North East region of High Peak in Derbyshire.
Hope House	Hope House (Chesterfield) Ltd	£10,000	The project will facilitate Hope House Support Workers to work with residents in order to increase their life skills, basic skills and provide ongoing support to address their drug and alcohol misuse, anti-social behaviour and offending history.

Details of commissions and grants awarded along with associated terms and conditions can all be found on the PCC's website.

## FINANCE

The Information provided in this Annual Report is taken from reports to the Strategic Priorities Assurance Board of 15 July 2019.

### Revenue

The final outturn against the 2018/19 Revenue Budget is summarised at **Table 1**, which shows that an overall underspend against the Revised Budget occurred for the year of £0.370m.

**Table 1**

Budget Heading	Original Budget £	Revised Budget £	Outturn £	Over/ (Under)spend £
Office of the Police and Crime Commissioner	3,295,924	3,295,924	2,970,646	(325,278)
Police Officer Pay & On Costs	100,123,400	101,389,700	101,518,839	129,139
Police Staff Pay & On Costs	47,082,500	47,864,800	47,103,892	(760,908)
Other Employee Expenses	792,000	797,000	717,973	(79,027)
Police Pensions	3,047,200	3,047,200	2,829,790	(217,410)
Premises	9,761,400	9,761,400	10,408,970	647,570
Transport	3,666,900	3,642,900	3,734,316	91,416

Supplies & Services	16,773,219	17,063,319	18,243,696	1,180,377
Agency	212,000	212,000	223,355	11,355
Pay & Price Contingency	0	0	0	0
Debt Charges	730,900	730,900	277,220	(453,680)
Revenue Contribution to Capital	2,942,000	3,213,500	3,213,500	0
Government Grants	(6,994,481)	(7,036,481)	(8,243,874)	(1,207,393)
General Income	(3,380,000)	(3,396,700)	(4,211,187)	(814,487)
Regional Units	11,595,900	9,686,600	9,460,027	(226,573)
Interest Receipts	(110,000)	(110,000)	(19,727)	90,273
Contributions to/from Reserves	(720,159)	(1,387,659)	(1,461,970)	(74,311)
<b>Sub-Total</b>	<b>188,818,703</b>	<b>188,774,403</b>	<b>186,765,466</b>	<b>(2,008,937)</b>
BCU Fund	318,200	312,600	245,697	(66,903)
Expenditure on National Policing	163,400	167,700	3,576	(164,124)
Other Specific Grants	62,000	62,000	57,581	(4,419)
Partnerships	516,500	562,100	378,098	(184,002)
<b>TOTAL DERBYSHIRE POLICE</b>	<b>189,878,803</b>	<b>189,878,803</b>	<b>187,450,418</b>	<b>(2,428,385)</b>
	additional Council Tax surpluses			0

<b>TOTAL UNDERSPEND</b>	<b>(2,428,385)</b>
less: Earmarked Covid-19 Funding	757,053
less: Earmarked Officer Uplift Funding	497,000
less: Earmarked Carry-Forwards	447,400
less: Transfer to the PCC's Reserve	356,191
<b>NET UNDERSPEND AFTER EARMARKED UNDERSPENDS</b>	<b>(370,741)</b>

## Capital

The Commissioner's capital outturn position for 2020/21 is shown in **Table 2**. It shows actual expenditure of £13.605m (87.9%) against an approved Capital Programme for 2020/21 of £15.467 as summarised below:

**Table 2**

	Ref	2020/21 Revised Budget £'000	2020/21 Outturn £'000	Budget Remaining £'000	Reprofile to 2021/22 £'000
<b>EXPENDITURE</b>					
<b>Building Works</b>					
Co-Locations with Fire	1	214	60	154	154
Business Continuity - Security Issues & UPS		90	13	77	77
Derby East LPU Accommodation	2	5,800	5,381	419	419
North East Division Accommodation	3	200	23	177	177
Other Building schemes (Refurbishments, Heating etc)	4	3,419	1,836	1,583	1,583
<b>Total Building Works</b>		<b>9,723</b>	<b>7,313</b>	<b>2,410</b>	<b>2,410</b>
<b>Vehicles &amp; Equipment</b>					
General Vehicle & Chief Officer Vehicle Replacement Programmes		1,557	1,554	3	-
CREST Vehicles		42	0	42	40
Equipment (incl Health & Safety)		320	208	112	111
Tasers		244	245	(1)	-

<b>Total Vehicles &amp; Equipment</b>	<b>5</b>	<b>2,163</b>	<b>2,007</b>	<b>156</b>	<b>151</b>
<b>IS Schemes</b>					
IS Replacement Projects	6,7	1,677	1,212	465	499
IS Infrastructure Projects		150	106	44	43
IS Customer Projects	8	225	86	139	139
Body Worn Video		636	636	-	-
Call Centre Telephony System	9	558	49	509	486
<b>Total IS Schemes</b>		<b>3,246</b>	<b>2,089</b>	<b>1,157</b>	<b>1,167</b>
<b>East Midlands Counter Terrorism Intelligence Unit (EMCTIU)</b>		<b>335</b>	<b>276</b>	<b>59</b>	<b>-</b>
<b>TOTAL PLANNED EXPENDITURE</b>		<b>15,467</b>	<b>11,685</b>	<b>3,782</b>	<b>3,728</b>
<b>National Schemes - Cyber Project funded from grant</b>		<b>-</b>	<b>635</b>	<b>(635)</b>	<b>-</b>
<b>Regional Schemes - funded by region</b>		<b>-</b>	<b>1,028</b>	<b>(1,028)</b>	<b>-</b>
<b>TOTAL PLANNED EXPENDITURE (including Region)</b>		<b>15,467</b>	<b>13,348</b>	<b>2,119</b>	<b>3,728</b>
Hardware & Equipment (funded through RCCO at year end therefore budget in Revenue)			257		

## Reserves

Table 3 gives a summary of reserves held by the Police and Crime Commissioner.

Table 3

**POLICE & CRIME COMMISSIONER FOR DERBYSHIRE**  
**STATEMENT OF LEVEL OF RESERVES AT 31 MARCH 2021 AND FORECAST LEVELS TO 31 MARCH 2024**

	2020 / 21				2021 / 22			2022 / 23			2023 / 24			
	Balances b/fwd at 1/04/20	Movements (to) / from Revenue	Transfers Between Reserves	Contributions to Capital	Balances at 31/03/21	Projected Movements (to) / from Revenue	Projected Contributions to Capital	Estimated Balances at 31/03/22	Projected Movements (to) / from Revenue	Projected Contributions to Capital	Estimated Balances at 31/03/23	Projected Movements (to) / from Revenue	Projected Contributions to Capital	Estimated Balances at 31/03/24
	£	£	£	£	£	£	£	£	£	£	£	£	£	£
<b>GENERAL RESERVES</b>	<b>5,500,000</b>	-		-	<b>5,500,000</b>	-	-	<b>5,500,000</b>	-	-	<b>5,500,000</b>	-	-	<b>5,500,000</b>
<b>EARMARKED RESERVES</b>														
<b>Useable:-</b>														
Operational Funding and Investment Reserve	2,493,585	172,542	217,100		<b>2,883,227</b>	(590,000)		<b>2,293,227</b>	(211,800)		<b>2,081,427</b>			<b>2,081,427</b>
Carry-forwards	1,194,314	( 137,620)	( 217,100)		<b>839,594</b>			<b>839,594</b>			<b>839,594</b>			<b>839,594</b>
PCC Grants & Commissioning	956,339	210,032			<b>1,166,371</b>	(100,000)		<b>1,066,371</b>			<b>1,066,371</b>			<b>1,066,371</b>
Covid-19 Funding Reserve	-	757,053			<b>757,053</b>			<b>757,053</b>			<b>757,053</b>			<b>757,053</b>
Officer Uplift Support Costs Reserve	-	497,000			<b>497,000</b>			<b>497,000</b>			<b>497,000</b>			<b>497,000</b>
National Projects Reserve	-				-			-			-			-
Local Council Tax Support	-				-	1,311,401		<b>1,311,401</b>	(1,311,401)		-			-
<b>Total Useable:-</b>	<b>4,644,238</b>	<b>1,499,006</b>	<b>0</b>	<b>0</b>	<b>6,143,244</b>	<b>621,401</b>	<b>0</b>	<b>6,764,645</b>	<b>(1,523,201)</b>	<b>0</b>	<b>5,241,444</b>	<b>0</b>	<b>0</b>	<b>5,241,444</b>
<b>Non-useable:-</b>														
PFI - Ilkeston	999,205	(75,671)			<b>923,534</b>	(85,772)		<b>837,762</b>	(96,409)		<b>741,353</b>	(106,480)		<b>634,873</b>
PFI - Derby	2,212,941	(458,484)			<b>1,754,457</b>	(354,106)		<b>1,400,351</b>	(388,984)		<b>1,011,367</b>	(424,270)		<b>587,097</b>
Insurance	485,365	(338,767)			<b>146,598</b>	5,400		<b>151,998</b>	5,500		<b>157,498</b>	6,000		<b>163,498</b>
<b>Total Non-useable:-</b>	<b>3,697,511</b>	<b>(872,922)</b>	<b>0</b>	<b>0</b>	<b>2,824,589</b>	<b>(434,478)</b>	<b>0</b>	<b>2,390,111</b>	<b>(479,893)</b>	<b>0</b>	<b>1,910,218</b>	<b>(524,750)</b>	<b>0</b>	<b>1,385,468</b>
<b>TOTAL EARMARKED RESERVES</b>	<b>8,341,749</b>	<b>626,085</b>	<b>0</b>	<b>0</b>	<b>8,967,834</b>	<b>186,923</b>	<b>0</b>	<b>9,154,757</b>	<b>(2,003,094)</b>	<b>0</b>	<b>7,151,663</b>	<b>(524,750)</b>	<b>0</b>	<b>6,626,913</b>
<b>TOTAL RESERVES</b>	<b>13,841,749</b>	<b>626,085</b>	<b>0</b>	<b>0</b>	<b>14,467,834</b>	<b>186,923</b>	<b>0</b>	<b>14,654,757</b>	<b>(2,003,094)</b>	<b>0</b>	<b>12,651,663</b>	<b>(524,750)</b>	<b>0</b>	<b>12,126,913</b>

**Statements of Accounts.** The 2018/19 Statements of Accounts for the Chief Constable and the Commissioner/Group are available on the PCC website

[PCC & Group Accounts](#)

[Chief Constable Accounts](#)

## CONTACT US

Office of the Police and Crime Commissioner for Derbyshire  
Butterly Hall  
RIPLEY  
Derbyshire  
DE5 3RS

T: 0300 122 6000

E: [pccoffice@derbyshire.pnn.police.uk](mailto:pccoffice@derbyshire.pnn.police.uk)

W: [www.derbyshire-pcc.gov.uk](http://www.derbyshire-pcc.gov.uk)